



Sink

S1000

Sink - 1 bowl - Standard Edge (STD) - for standard built in installation

Code: 1129 000

Product Details

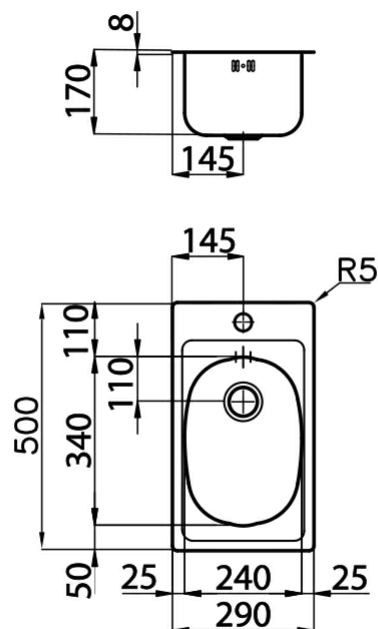
Materials/Finishes	Foster-brushed finish AISI 304 stainless steel
Cabinet	30 cm
Dimensions	290x500 mm
Edge/Installation Type	Standard Edge (STD) - for standard built in installation
Cut out	270x480 mm
Number of bowls	1 bowl
Bowl dimension	240x340 mm
Waste fitting	2" waste
Mixer holes	One standard tap hole
Standard fittings	fixing brackets, gasket, waste fitting, overflow and siphon. Packing: single carton box.

Features



Added value

Dimensions



22-02-2019 08:05:26